

40900

WOODWARD AVE

STONERIDGE OFFICE PARK III | BLOOMFIELD HILLS, MI

CLASS A BUILDING
UNDER NEW
OWNERSHIP
AND MANAGEMENT



LOCATED WITHIN
5 MILES OF
SHOPPING AND DINING



DANIEL CANVASSER, CCIM
Executive Managing Director
248.350.8141
dcanvasser@ngkf.com

MIKE VALANT
Director
248.357.6568
mvalant@ngkf.com

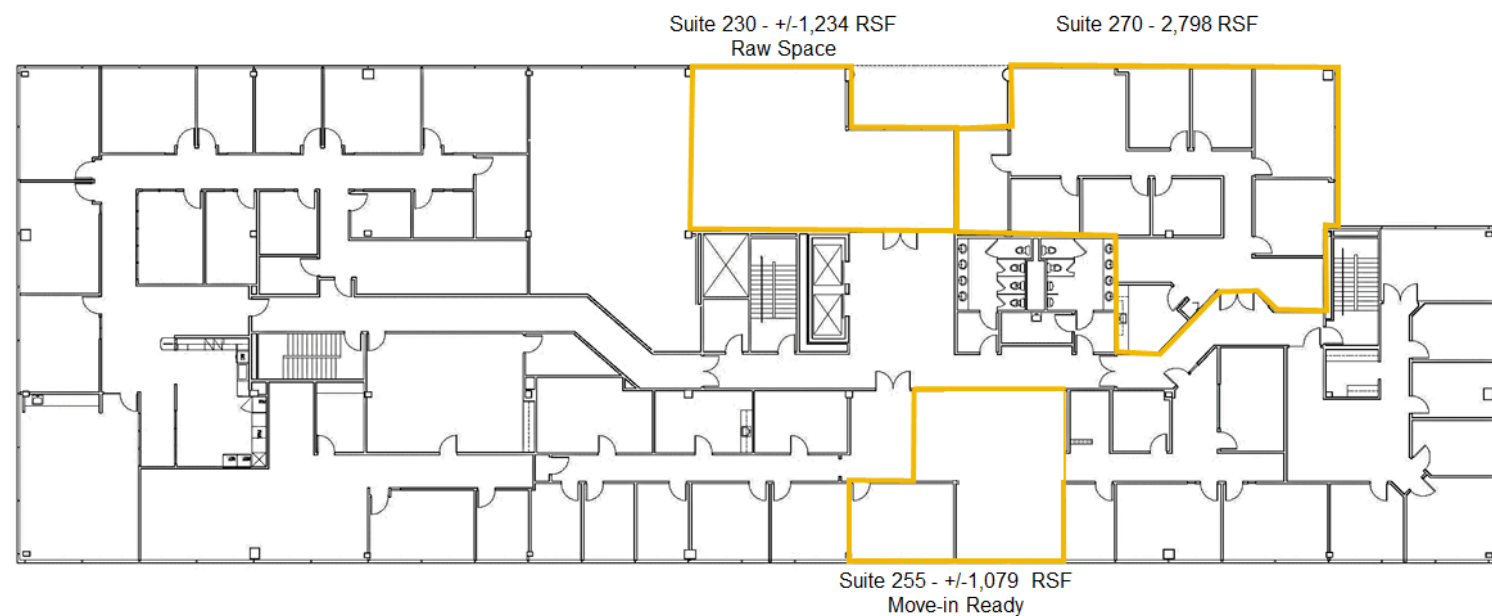


Procuring broker shall only be entitled to a commission calculated in accordance with the rates approved by our principal only if such procuring broker executes a brokerage agreement acceptable to us and our principal and the conditions as set forth in the brokerage agreement are fully and unconditionally satisfied. Although all information furnished regarding property for sale, rental, or financing is from sources deemed reliable, such information has not been verified and no express representation is made nor is any to be implied as to the accuracy thereof and it is submitted subject to errors, omissions, change of price, rental or other conditions, prior sale, lease or financing, or withdrawal without notice and to any special conditions imposed by our principal.



FLOOR PLANS

2ND FLOOR | Suite 230 +/-1,234 RSF (raw space)
Suite 270 2,798 RSF (combined 4,032 RSF)
Suite 255 +/-1,300 RSF (move-in ready)



3RD FLOOR | 2,568 RSF



BUILDING SPECIFICATIONS

- High-end professional office building located in the heart of Bloomfield Hills
- Major renovations completed with new lobbies, restrooms and corridors
- On-site covered executive parking
- 1,234 RSF & 2,798 RSF (combined 4,032 RSF), & 1,079 RSF available on second floor
- 2,568 RSF corner suite available on third floor with abundance of natural light
- Numerous restaurants, financial institutions and hotels within close proximity
- Building signage available
- Smaller suites with prime elevator lobby exposure available

